

# RX SERIES ANALYSER OVERVIEW

EXCELLENCE IN CLINICAL CHEMISTRY TESTING



**RAN**OX

01	INTRODUCTION
02	THE RX SERIES
04	RX MISANO
06	RX MONACO
08	RX DAYTONA+
10	RX IMOLA
12	RX MODENA
14	THE RX SERIES TEST MENU
16	THE RX SERIES A-Z TEST MENU
20	RANDOX - A GLOBAL DIAGNOSTIC SOLUTIONS PROVIDER
21	CONTACT US



## INTRODUCTION TO THE RX SERIES

Patient care is the primary focus of clinical chemistry testing and Randox has developed the RX series of clinical chemistry analysers for high quality semi-automated and fully automated testing.

With placements in over 120 countries worldwide, the RX series continues to revolutionise a variety of laboratory types including:

- Clinical Laboratories
- Hospital Laboratories
- University & Educational Institutes
- Research Laboratories
- Veterinary Laboratories
- Food & Wine Laboratories

The RX series combines robust hardware and intuitive software with the world leading RX series test menu, including routine chemistries, specific proteins, lipids, therapeutic drugs, drugs of abuse, antioxidants and diabetes testing.

Renowned for quality and reliability, the RX series has one of the most extensive dedicated clinical chemistry test menus on the market guaranteeing real cost savings through consolidation of routine and specialised tests onto a single platform. This extensive dedicated test menu of high quality reagents guarantees excellence in patient care ensuring unrivalled precision and accuracy reducing costly test re-runs or misdiagnosis and offering complete confidence in results.

To find out more visit [randox.com/clinical-chemistry-analysers/](https://www.randox.com/clinical-chemistry-analysers/)

# » THE RX SERIES

## 170 photometric tests per hour

The RX monaco is a fully automated solution for low to mid volume clinical chemistry testing offering the ultimate in convenience, performance and confidence. At optimal configuration, the RX monaco performs 170 tests per hour providing cost effective, high quality testing



## A high performance semi-automated analyser

The RX misano has been developed with the user in mind by incorporating a responsive touch-screen display. The sleek ergonomic design boasts intuitive user-friendly software allowing for test menu personalisation for ease of use. The RX misano is capable of high standard, precise results at a competitive price per test



## 270 photometric tests per hour or 450 tests per hour with ISE

The RX daytona+ is a fully automated, benchtop, clinical chemistry analyser capable of performing high quality testing on a compact analyser, for accurate results you can trust. The most versatile analyser in its class, the RX daytona+ combines robust hardware and intuitive software with the world leading RX series test menu for unrivalled performance

## 400 photometric tests per hour or 560 tests per hour with ISE

The RX imola is a cost effective system that delivers consistent high quality results. Capable of handling the workload of a medium to high throughput laboratory the RX imola provides rapid, comprehensive testing on a small footprint analyser. The RX imola is a fully automated system with random access and STAT sampling functionality, boosting productivity and saving time when it matters most



## 800 photometric tests per hour or 1200 tests per hour with ISE

Capable of running up to 1,200 tests per hour, with direct HbA1c testing capabilities, the RX modena consolidates all your assay requirements onto one intuitive platform. The RX modena boasts icon based, interactive touch-screen technology adding a modern flair to your laboratory



## A high performance, semi-automated clinical chemistry analyser

The RX misano shines a new light on semi-automated clinical chemistry testing with increased auto-functionality and ground-breaking technology. Revolutionising the RX series with its bold look, innovative design, and outstanding performance, it sets the benchmark for the next generation of the RX series clinical chemistry analysers. The RX misano is capable of high standard, precise results at a competitive price per test.



### MAIN FEATURES OF THE RX MISANO

- Large 7" touch screen
- Icon based software
- USB 2.0 port
- Minimal daily maintenance
- Automatic flagging of testing errors
- Switch between multiple languages
- Advanced password protection function
- Ability to run flow cell and cuvette mode
- Advanced QC software
- Humidity and temperature sensors
- One year warranty as standard plus unrivalled technical support from Randox



### BENEFITS OF THE RX MISANO

#### Extensive dedicated RX series test menu

- Expand testing capabilities on one intuitive compact platform with the world leading RX series test menu
- Ability to perform both routine and specialised testing
- Capable of analysing a variety of sample types, including: Serum, Plasma, Urine, Wine

#### Optimum Performance

- Automatic flagging of errors ensures timely troubleshooting for accurate results
- Advanced QC software allows performance to be monitored at all times
- Advanced password protection function ensures confidentiality of results

#### Flexibility

- Extremely small footprint, takes up minimal space in the laboratory and is easily transported
- Up to 10 wavelengths can be generated via solid state filter device (340-700nm standard)
- Ability to run both flow cell and cuvette mode
- 3 levels of password protection available enabling different user access levels

#### Excellent Functionality

- Multiple languages available for extra convenience
- Intuitive icon based, touch screen technology for ease of use
- USB port for importing Randox defined test menus, and exporting patient, QC and Calibration results
- Minimal maintenance required, simple on screen instructions will guide the user through maintenance steps required

### SYSTEM OVERVIEW



#### Cuvettes & Flow Cell

- Option to run flow cell or cuvette mode ensures a maximum number of chemistries can be performed on one system
- Flow cell washing avoids contamination ensuring accurate results are produced



#### USB Port

- USB port for importing Randox-defined test menus and exporting patient, QC and calibration results
- Enables the user to quickly export results from the analyser



#### LCD Touch-Screen Display

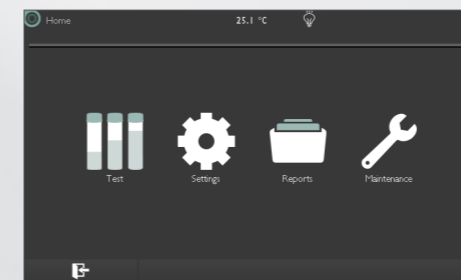
- Quality display on a large 7" LCD touch-screen responsive even when wearing lab gloves
- Simple on screen icon based navigation allows the user to efficiently complete their testing with minimal effort



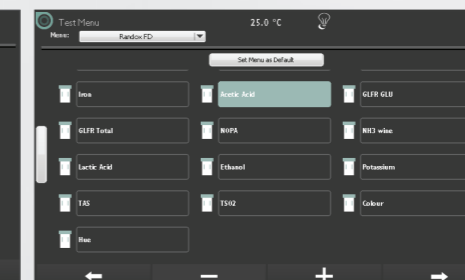
#### Advanced Password Protection

- Advanced password protection functions for analyser setup, assay management and QC result inclusion/exclusion
- This gives laboratories confidence that their results are well protected on this system and only those who are authorised can gain access

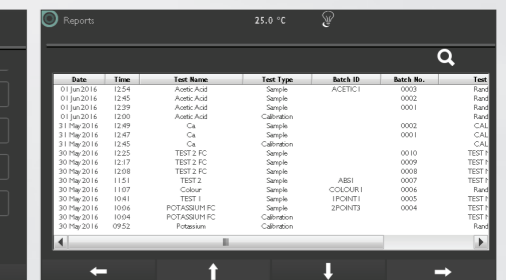
### SOFTWARE



Home Screen



Parameter Screen



Reports Screen

### ORDERING INFORMATION

RX misano analyser	RX6015
RX misano cuvette incubator	A702-496

To find out more visit [randox.com/rx-misano/](http://randox.com/rx-misano/)



## A compact fully automated solution for high quality clinical chemistry testing

The RX monaco is a fully automated, cost effective solution for low to mid volume clinical chemistry testing offering the ultimate in convenience, performance and confidence. The RX series test menu allows for complete consolidation of routine and specialised testing onto one efficient, easy to use platform.



## MAIN FEATURES OF THE RX MONACO

- 170 photometric tests per hour
- 120 semi-permanent cuvettes
- Low water consumption of 5.5 litres per hour at maximum throughput
- Grating spectrophotometry system generating 12 wavelengths ranging from 340-800nm
- Sample Dead Volume 100µl
- Easy to use Windows® based software
- One year warranty as standard plus unrivalled technical support from Randox

## BENEFITS OF THE RX MONACO

### Robust, Reliable, Easy-to-Use

- Low maintenance requirements
- Online help guide available to assist user with analyser functions, troubleshooting and maintenance queries
- Integrated barcode readers for reagent and sample identification
- User friendly Microsoft Windows® based software
- Generation of Levey-Jennings charts, calibration curves and QC statistics

### Extensive dedicated Test Menu

- Extensive test menu covering routine chemistries, specific proteins, lipids, antioxidants, diabetes and veterinary testing
- Capable of analysing a variety of sample types: Serum, Plasma and Urine

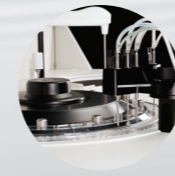
### Optimum Performance

- Cuvette check function ensures only clean and viable reaction vessels are used
- Built in inventory management system automatically reports remaining reagent volume
- Sample volume of just 3 - 35µl (0.1µl increments)

### Flexibility

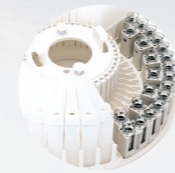
- Available as a bench top or floor standing model
- User defined QC multi-point rules
- Calibration options include 1 point, 2 point, multi-point & non-linearity method
- QC history can be viewed
- 3 levels of password protection available enabling different levels of access

## SYSTEM OVERVIEW



### Wash Station

- 12 stage washing system which includes acid, alkali and pure water wash steps
- Independent stirring system automatically rinsed with purified water to reduce carryover



### Reagent & Sample Carousel

- Shared reagent and sample carousel with 66 user defined positions
- Cooled reagent and sample carousel (removable) ensures reagent, controls and calibrators can be stored on-board the analyser without compromising stability



### Reaction Carousel

- Reaction system with 120 semi-permanent optical plastic cuvettes
- 15 second cycle time



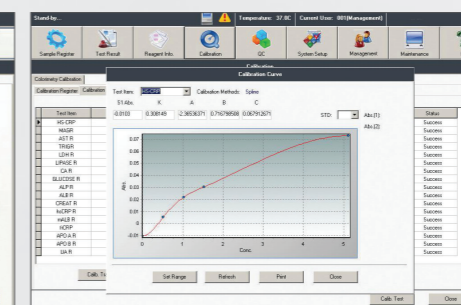
### Pipette

- Single reagent and sample pipette with liquid level detection and collision protection
- Rinsed inside and out (warm water rinsing)

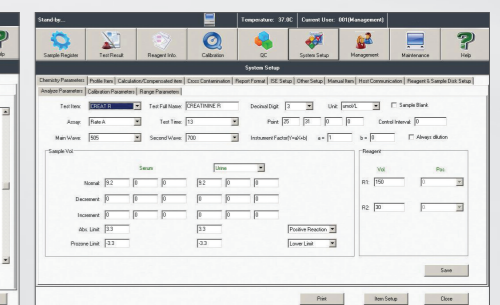
## SOFTWARE



Run Monitor Screen



Calibration Screen



Parameter Screen

## ORDERING INFORMATION

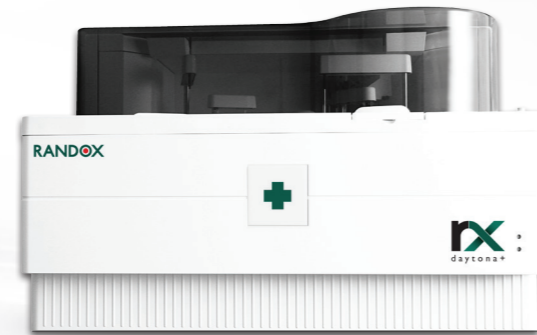
RX monaco analyser (benchtop)	RX5000
RX monaco analyser with stand	RX5001

To find out more visit [randox.com/rx-monaco/](http://randox.com/rx-monaco/)



## A fully automated clinical chemistry analyser with unrivalled performance

The RX daytona+ is a fully automated, random access, bench top analyser. The comprehensive and flexible test menu on the RX daytona+ allows consolidation of a wide range of routine and specialised tests onto one, easy to use, platform. Direct, on-board, HbA1c testing capabilities allow HbA1c tests to be run immediately as there is no sample incubation step required, saving time in the laboratory.



### MAIN FEATURES OF THE RX DAYTONA+

- 270 photometric tests per hour
- Optional ISE unit which enables a total throughput of 450 tests per hour
- 72 semi-permanent cuvettes on-board with cuvette check function and 12 stage washing
- 12 wavelength options ranging from 340-800nm
- Low water consumption of 5 litres per hour at maximum throughput
- Standard and Paediatric sample cups can be used on-board
- Sample Dead Volume 150µl for primary samples
- Sample Dead Volume 100µl for paediatric samples
- One year warranty as standard plus unrivalled technical support from Randox

### + BENEFITS OF THE RX DAYTONA+

#### Optimum Performance

- Built in inventory management system automatically reports remaining reagent volume
- Separate sample and reagent pipettes including liquid level sensors, crash protection and clot detection
- Dual 5 speed stirrers optimised for each assay ensuring better performance
- Sample volume of just 1.5µl (0.1µl increments)

#### Excellent Functionality

- User friendly Microsoft Windows® based software.
- Generation of Levey-Jennings charts, calibration curves and QC statistics
- Minimal maintenance required
- Integrated barcode readers for reagent and sample identification

#### Extensive Dedicated Test Menu

- Extensive test menu covering routine chemistries, specific proteins, lipids, therapeutic drugs, drugs of abuse, antioxidants, diabetes and veterinary testing
- Capable of analysing a variety of sample types: Serum, Plasma and Urine
- Direct HbA1c testing capabilities

#### Flexibility

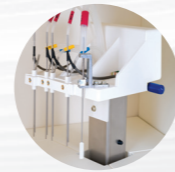
- Cooled reagent carousel ensures reagents can be stored on-board the analyser without compromising stability
- Option to use standard sample cups or paediatric cups for small sample volumes
- Calibration options include: Factor, Linear, Point to point, Log-logit, Exponential, Spline and Spline 2
- QC history can be viewed
- 3 levels of password protection available enabling different levels of access

### SYSTEM OVERVIEW



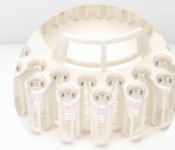
#### Reagent Carousel

- Versatile reagent carousel with 50 cooled positions
- Reagent carousel is removable



#### Wash Station

- 12 stage washing process
- Water consumption is maximum of 5 litres per hour



#### Sample Carousel

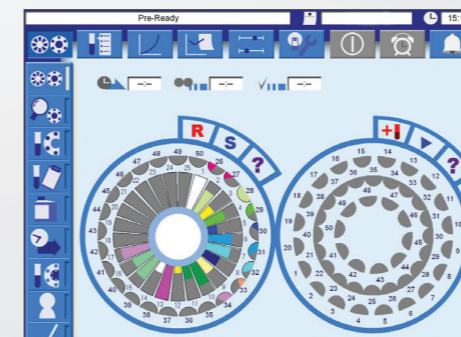
- Universal sample carousel with 40 positions and 10 control/calibrator positions
- Sample carousel is removable



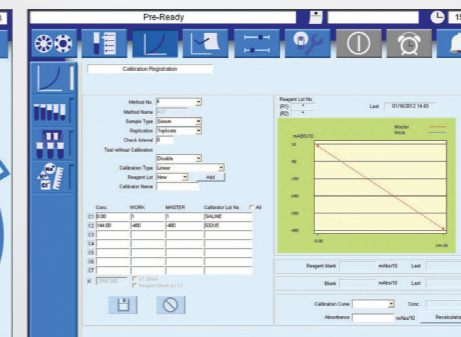
#### Cuvettes

- 72 semi-permanent reaction cuvettes
- Cuvette check function ensures only clean and viable reaction vessels are used

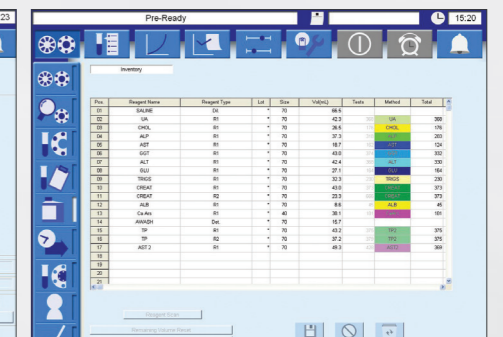
### SOFTWARE



Run Monitor Screen



Calibration Screen



Inventory Screen

### ORDERING INFORMATION

RX daytona+ analyser with ISE	RX4040
RX daytona+ analyser without ISE	RX4041

To find out more visit [randox.com/rx-daytona-plus/](http://randox.com/rx-daytona-plus/)



## Rapid, comprehensive clinical chemistry testing

The RX imola is a cost effective system that delivers consistent high quality results. Capable of handling the workload of a medium to high throughput laboratory the RX imola provides rapid, comprehensive testing on a small footprint analyser.



## MAIN FEATURES OF THE RX IMOLA

- 400 photometric tests per hour
- 560 tests per hour including ISE
- 90 permanent Pyrex® cuvettes, with 8 stage washing
- 12 wavelength options ranging from 340-800nm
- Water consumption of 18 litres per hour
- Standard and Paediatric sample cups can be used on-board
- Sample Dead Volume 150µl for primary samples
- Sample Dead Volume 100µl for paediatric samples
- One year warranty as standard plus unrivalled technical support from Randox



## BENEFITS OF THE RX IMOLA

### Optimum Performance

- Long life span cuvettes of approx. 5 years
- Built in inventory management system to monitor reagent volumes and remaining number of tests
- Capable of a medium to high throughput
- Sample volume of just 2-35µl (0.1µl increments)

### Extensive Dedicated Test Menu

- Extensive test menu covering routine chemistries, specific proteins, lipids, therapeutic drugs, drugs of abuse, antioxidants, diabetes and veterinary testing.
- Capable of analysing a variety of sample types: Serum, Plasma and Urine
- Direct HbA1c testing capabilities

### Excellent Functionality

- User friendly Microsoft Windows® based software
- Generation of Levey-Jennings charts, calibration curves and QC statistics
- Daily maintenance takes less than 5 minutes
- Integrated barcode readers for reagents and sample management

### Flexibility

- Calibration options include: Factor, Linear, 2 Point, Point to point, Spline, Log-logit and Exponential
- QC history can be viewed
- 3 levels of password protection available enabling different levels of access

## SYSTEM OVERVIEW



### Reagent Carousel

- 60 cooled reagent positions on the reagent carousel ensures reagents can be stored on-board the analyser without compromising stability
- Automatic barcode reagent identification



### Wash Station

- 8 stage washing system
- Includes acid, alkali and pure water wash steps
- Cuvettes have curved inner surface to aid efficient cleaning and drying



### Sample Carousel

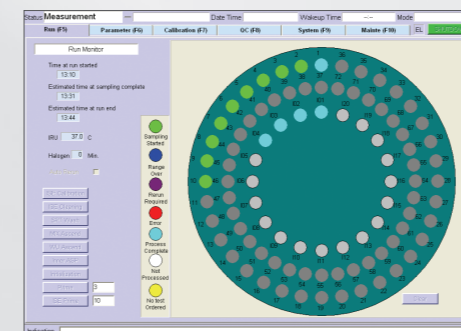
- Universal sample carousel with 72 positions
- Reagent and sample carousels are removable
- 20 cooled positions available for controls and calibrators



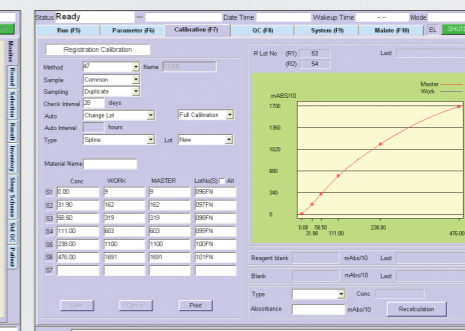
### Pipette

- Dual micro-pipettes with liquid level sensors, clot and bubble detection
- Dual 5 speed stirrers optimised for each assay ensuring better performance

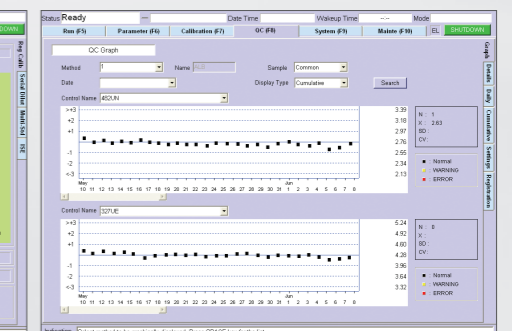
## SOFTWARE



Run Monitor Screen



Calibration Screen



Quality Control Screen

## ORDERING INFORMATION

RX imola analyser RX4900

To find out more visit [randox.com/rx-imola/](http://randox.com/rx-imola/)



## A superior high throughput, fully automated clinical chemistry analyser

The RX modena is a high volume, floor standing fully automated clinical chemistry analyser. With a throughput of 1,200 tests per hour, combined with the ever expansive, unrivalled RX series test menu, the RX modena offers a winning combination for large, multi-disciplinary laboratories.



### MAIN FEATURES OF THE RX MODENA

- 800 photometric tests per hour
- 1,200 tests per hour including ISE
- Fully automated on-board haemolysis function for HbA1c testing
- Continuous loading hatch
- Reagent carousel with 100 cooled positions
- Removable sample carousel with 94 sample positions and 10 positions for controls and calibrators
- Water consumption of 20L per hour
- Advanced QC capabilities – daily, monthly and batch QC with data archiving, Levey Jennings charts, Automatic QC and Automatic calibration
- Minimal maintenance required
- One year warranty as standard plus unrivalled technical support from Randox



### BENEFITS OF THE RX MODENA

#### Optimum Performance

- Built in inventory management system automatically calculates remaining reagent volume and the number of tests available, alert for shortage, expired reagent and expired calibration
- Automatic test re-run function with diluted, reduced or increased sample volume saves time and reduces risk of human error
- Automatic sample dilution
- Continuous loading allows samples to be added during run enhancing productivity

#### Excellent Functionality

- User friendly Microsoft Windows® based software
- Interactive touch-screen technology
- Barcode readers for both sample and reagent identification
- Simple twice yearly preventative maintenance

#### Extensive Dedicated Test Menu

- Large range of tests available, including routine and unique assays optimised for superior performance
- Ability to run specific proteins removes the need for a separate nephelometry system
- Direct HbA1c testing capabilities

#### Flexibility

- 13 wavelengths generated via diffraction grating (340 - 800nm)
- Capable of running end point, 2 point end rate, 2 point rate and ISE
- 7 different calibration options available including: Factor, Linear, Point to point, Log-logit, Exponential, Spline and Spline 2

### SYSTEM OVERVIEW



#### Reagent Carousel

- Reagent carousel with 100 cooled positions
- Dedicated twin reagent micropipette & dedicated sample pipette both equipped with liquid level sensors and crash detection
- Automatic barcode reagent identification



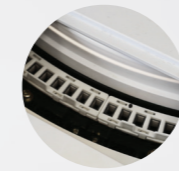
#### Wash Station

- 7 stage washing system
- Economic platform with water consumption of less than 20 litres per hour at peak use



#### Sample Carousel

- Removable sample carousel with 94 positions for samples, and 10 positions for controls and calibrators
- Sample pipette equipped with bubble detection and 3 levels of clot detection



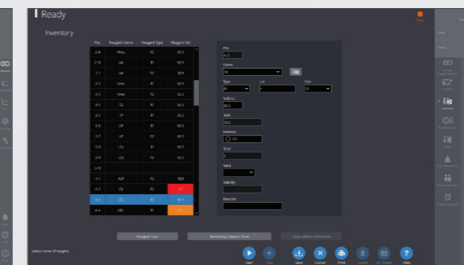
#### Reaction System

- 153 cuvettes onboard with cuvette check function ensuring only clean and viable reaction vessels are used
- Separate sample and reagent pipettes to minimise carryover

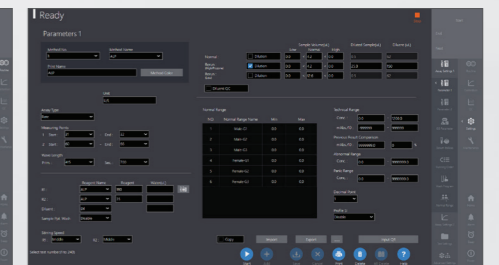
### SOFTWARE



Run Monitor Screen



Calibration Screen



Parameter Screen

### ORDERING INFORMATION

RX modena analyser

RX9000

To find out more visit [randox.com/rx-modena/](http://randox.com/rx-modena/)



# » THE RX SERIES TEST MENU



## CLINICAL

<b>AUTOIMMUNE:</b> Complement Component 3 Complement Component 4 CRP CRP Full Range (0.3-160mg/l) CRP High Sensitivity IgA IgE IgG IgM Rheumatoid Factor	AST (GOT) Direct Bilirubin Calcium Chloride CO <sub>2</sub> Total Creatinine Glucose Lactate Potassium Sodium Total Bilirubin Total Protein Urea	IgA IgG IgM Iron (UIBC) LAP LDH Total Bilirubin Total Protein Transferrin Transthyretin (Prealbumin)	TIBC Transferrin Transthyretin (Prealbumin) Zinc
<b>BASIC METABOLIC PROFILE:</b> Calcium CO <sub>2</sub> Total Chloride Creatinine Glucose Potassium Sodium Urea	<b>DIABETES:</b> Adiponectin Cholesterol Creatinine Cystatin C Direct HDL Cholesterol Direct LDL Cholesterol Fructosamine Glucose Glycerol HbA1c/Hb Microalbumin NEFA (Non-Esterified Fatty Acids) Ranbut (Hydroxybutyrate) Total Protein Triglycerides Urinary Protein	<b>INFLAMMATION AND INFECTION:</b> Alpha-1 Acid Glycoprotein ASO CRP Lactate Rheumatoid Factor	<b>PANCREATIC FUNCTION:</b> Amylase Glucose LDH Lipase Pancreatic Amylase
<b>BONE PROFILE:</b> Alkaline Phosphatase Calcium Phosphorus Total Protein	<b>LIPIDS:</b> Apolipoprotein A-I Apolipoprotein All Apolipoprotein B Apolipoprotein CII Apolipoprotein CIII Apolipoprotein E Cholesterol Direct HDL Cholesterol Direct LDL Cholesterol HDL3 Lipoprotein (a) sLDL Triglycerides	<b>RENAL FUNCTION:</b> Albumin Ammonia Beta-2 Microglobulin Calcium Chloride Creatinine Cystatin C Glucose HbA1c/Hb IgG LDH Magnesium Microalbumin Potassium Sodium Phosphorus (Inorganic) Urinary Protein Urea Uric Acid	
<b>CARDIAC:</b> Adiponectin Cholesterol CK-MB CK-NAC CRP CRP Full Range (0.3-160mg/l) CRP High Sensitivity Digoxin Direct HDL Cholesterol Direct LDL Cholesterol HDL3 H-FABP Homocysteine Lipoprotein (a) Myoglobin sLDL Triglycerides TxB Cardio	<b>ELECTROLYTES:</b> Calcium Chloride (Nondirect) CO <sub>2</sub> Total Lithium Magnesium Potassium (Nondirect) Sodium (Nondirect)	<b>NEONATAL SCREENING:</b> Alpha-1 Antitrypsin CRP CRP Full Range (0.3-160mg/l) CRP High Sensitivity IgE Transthyretin (Prealbumin)	
<b>COMPREHENSIVE METABOLIC PROFILE:</b> Albumin Alkaline Phosphatase ALT	<b>HAEMOLYTIC ANAEMIA:</b> G-6-PDH Haptoglobin LDH	<b>NUTRITIONAL STATUS:</b> Albumin Copper Ferritin Iron Iron (UIBC) Lipase Magnesium Potassium sTfR	
	<b>HEPATIC FUNCTION:</b> Albumin Aldolase Alkaline Phosphatase Alpha-1 Antitrypsin ALT Ammonia		



## VETERINARY

Albumin Alkaline phosphatase ALT (GPT) Aldolase Ammonia Amylase AST (GOT) Bile acids Bilirubin Calcium Chloride	Cholesterol Cholinesterase (Butyryl) CK-NAC CO <sub>2</sub> Total Copper Creatinine Canine CRP CRP Fructosamine Gamma-GT GLDH	Glucose Glycerol HDL Iron (UIBC) Lactate Lactate dehydrogenase LDL Lipase Magnesium NEFA (Non-esterified fatty acids) Phosphorus (Inorganic)	Potassium Ranbut (Hydroxybutyrate) Ransel (Glutathione peroxidase) Ransod (Superoxide dismutase) Sodium Total Protein Triglycerides Urea Uric Acid Urinary protein Zinc
---	---	--	---



## TOXICOLOGY

<b>THERAPEUTIC DRUGS:</b> Acetaminophen Carbamazepine Digoxin Gentamicin Lithium	Phenobarbital Phenytoin Salicylate Valproic Acid	<b>DRUGS OF ABUSE:</b> Amphetamines Barbiturates Benzodiazepines Cannabinoids Cocaine metabolite	Ecstasy EDDP Ethanol Methadone Opiates
---	---	---	--



## PROTEINS

<b>SPECIFIC PROTEINS:</b> Alpha-1 Antitrypsin Alpha-1 Acid Glycoprotein Apolipoprotein A-I Apolipoprotein All Apolipoprotein B Apolipoprotein CII Apolipoprotein CIII Apolipoprotein E	ASO Beta-2 Microglobulin Ceruloplasmin Complement Component 3 Complement Component 4 CRP CRP Full Range (0.3-160mg/l) CRP High Sensitivity Cystatin C	Ferritin Fructosamine Haptoglobin HbA1c/Hb IgA IgE IgG IgM Lipoprotein (a)	Microalbumin Myoglobin Rheumatoid Factor sTfR Transthyretin (Prealbumin) Transferrin
--	---	--	---



## RESEARCH

<b>ANTIOXIDANTS:</b> Albumin Bilirubin Ferritin Glutathione Reductase Ransel (Glutathione Peroxidase) Ransod (Superoxide Dismutase) TIBC Total Antioxidant Status	Transferrin Uric Acid	Glucose/fructose Lactic acid Malic acid NOPA Potassium TAS Total SO <sub>2</sub>	<b>BIOTECHNOLOGY:</b> Glutamate Glutamine
	<b>FOOD AND WINE TESTING:</b> Acetic acid Ammonia Copper Ethanol		<b>SPECIALITY:</b> Acid phosphatase

# » THE RX SERIES A-Z TEST MENU



## SEMI-AUTOMATED (RX MISANO)

Acetic Acid	Cholinesterase	Lactate
Acid Phosphatase	CK-MB	Lactic Acid
Albumin	CK-NAC	Lipase
Aldolase	CO <sub>2</sub> Total	Magnesium
Alkaline Phosphatase	Copper	Malic Acid
ALT (GPT)	Creatinine	Microalbumin
Ammonia	Cystatin C	NEFA (Non-esterified fatty acids)
Amylase	D-3-Hydroxybutyrate (Ranbut)	Phosphorus (Inorganic)
Apolipoprotein A- I	Direct HDL Cholesterol	Potassium
Apolipoprotein B	Direct LDL Cholesterol	Sodium
ASO	G-6-PDH	Superoxide Dismutase (Ransod)
AST (GOT)	Gamma-GT	Total Antioxidant Status
Beta-2 Microglobulin	GLDH	Total Protein
Bile acids	Glucose Oxidase	Triglycerides
Bilirubin (Direct)	Glucose Hexokinase	Urea
Bilirubin (Total)	Glutathione Peroxidase (Ransel)	Uric Acid
Calcium	Glutathione Reductase	Urinary protein
Chloride	Glycerol	Zinc
Cholesterol	Iron	

16

Product availability may vary from country to country.

# » THE RX SERIES A-Z TEST MENU



## AUTOMATED

Acetaminophen	Carbamazepine	Glutamate	Methadone
Acetic Acid	Ceruloplasmin	Glutamine	Microalbumin
Acid phosphatase	Chloride (Non-Direct)	Glutathione Peroxidase (Ransel)	Myoglobin
Adiponectin	Cholesterol	Glutathione Reductase	NEFA (Non-Esterified Fatty Acids)
Albumin	Cholinesterase (Butyryl)	Glycerol	Opiates
Aldolase	CK-MB	Haptoglobin	Pancreatic Amylase
Alkaline Phosphatase	CK-NAC	HbA1c/Hb	Phenobarbital
Alpha-1 Acid Glycoprotein	CO <sub>2</sub> Total	HDL3	Phenytoin
Alpha-1 Antitrypsin	Cocaine metabolite	HDL Cholesterol (Direct)	Phosphorus
ALT (GPT)	Complement Component 3	Heart-Type Fatty Acid Binding Protein (H-FABP)	Potassium (Non-Direct)
Ammonia	Complement Component 4	Homocysteine	Rheumatoid Factor
Amphetamines	Copper	Hydroxybutyrate (Ranbut)	Salicylate
Amylase	Creatinine	IgA	sLDL
Apolipoprotein A- I	CRP	IgE	Sodium (Non-Direct)
Apolipoprotein All	CRP Full Range (0.3-160mg/l)	IgG	sTfR
Apolipoprotein B	CRP High Sensitivity	IgM	Superoxide Dismutase (Ransod)
Apolipoprotein CII	Cystatin C	Iron	TIBC
Apolipoprotein CIII	Digoxin	Lactate	Total Antioxidant Status
Apolipoprotein E	Ecstasy	LAP	Total Protein
ASO	EDDP	LDH	Transferrin
AST (GOT)	Ethanol	LDL Cholesterol (Direct)	Transthyretin (Prealbumin)
Barbiturates	Ferritin	Lipase	Triglycerides
Benzodiazepines	Fructosamine	Lipoprotein (a)	TxB Cardio
Beta-2 Microglobulin	G-6-PDH	Lithium	Urea
Bile Acids	Gamma GT	L-Lactic Acid	Uric Acid
Bilirubin (Direct & Total)	Gentamicin	Magnesium	Urinary Protein
Calcium	GLDH	Malic Acid	Valproic Acid
Canine CRP	Glucose		Zinc
Cannabinoids	Glucose/Fructose		

17

Product availability may vary from country to country. Please refer to individual product brochures for analyser specific test menus.

## » GLOBAL REACH. LOCAL SUPPORT



Innovation and customer care are both our commitment and our passion. Our focus is on providing you with world-class customer service and maintaining excellent relationships with all of our customers.

With over 35 years' experience, we fully understand the demands and needs of the clinical chemistry laboratory and recognise the importance of maintaining a consistent workflow of high quality results. Our team of trained engineers are on hand to work with you in preserving the continuity of your operations while maximising the potential of your RX series instrument. We know time is critical in any laboratory and our global network means we are uniquely positioned to meet your needs with local service and support.

Minimal downtime is one of the most important considerations in a laboratory setting and we are here to ensure that your analyser experiences as little downtime as possible. We will support your laboratory in providing efficient and effective

patient care and are committed to maintaining the integrity of your laboratory through unrivalled support and a genuine understanding of your needs.

We take pride in our analysers, and realise how important they are to your laboratory and to patients. Servicing your RX series analyser is essential in ensuring continuous productivity and maintaining the highest quality of results you come to expect from the RX series clinical chemistry analysers. The quality of laboratory test results is dependent on the performance of your analyser; therefore the importance of servicing and preventative maintenance cannot be overstated. Regular servicing as a preventative measure is one of the best ways to ensure that you get optimal results from your RX series instrument.

## » EXPECT EXCELLENCE



### OUR PEOPLE

You should expect excellent service every time you make contact with us. That is why we train every member of our team to the highest possible standard to ensure that you receive the highest quality of customer service that you deserve, thus ensuring you enjoy a consistent, helpful and stress-free experience.



### DEDICATED RX SERIES REAGENTS

The RX series has one of the most extensive dedicated test menus on the market, giving biochemistry laboratories the opportunity to advance their routine and niche testing. We ensure all tests are optimised and validated on RX systems for unrivalled performance.



### SPECIALIST OFFERINGS

The RX series test menu goes beyond routine chemistries. At Randox we re-invest significantly in research and development to ensure we meet the ever changing needs of laboratories. As a result, the extensive range of reagents offered in the RX series test menu includes niche tests such as; sLDL, Lipoprotein(a), H-FABP, Cystatin C, TxBCardio, HDL2/3-C, Adiponectin, Homocysteine, Copper, D-3- Hydroxybutyrate, G-6-PDH, Non-Esterified Fatty Acids, Total Antioxidant Status and Zinc.

For more information on the tests we offer visit [randox.com/complete-rx-test-menu/](http://randox.com/complete-rx-test-menu/)  
Or send us an email

[theRXseries@randox.com](mailto:theRXseries@randox.com)



# » RANDOX - A GLOBAL DIAGNOSTIC SOLUTIONS PROVIDER

Randox has been supplying laboratories worldwide with revolutionary diagnostic solutions for over 35 years. Our experience and expertise allow us to create a leading product portfolio of high quality diagnostic tools which offer reliable and rapid diagnosis. We believe that by providing laboratories with the right tools, we can improve health care worldwide.

## REAGENTS

Randox offers an extensive range of diagnostic reagents, giving biochemistry laboratories the opportunity to advance their routine and niche testing.

The Randox reagents range goes beyond routine chemistries. At Randox we re-invest significantly in research and development to ensure we meet the ever changing needs of the laboratory. As a result, the esoteric reagents range from Randox is extensive and includes sLDL, Lipoprotein(a), H-FABP, Cystatin C, TxBCardio, Adiponectin, Bile Acids, Copper, D-3-Hydroxybutyrate, G-6-PDH, Non-Esterified Fatty Acids, Total Antioxidant Status and Zinc.

Randox Reagents provide a number of benefits for the laboratory: Cost savings through excellent stability, automated methods and standards supplied with some kits; confidence in results with high performance methods, minimal interferences and wide measuring ranges; convenience and choice with applications for over 100 biochemistry analysers; liquid ready-to-use reagents, a wide range of kit sizes and complementary controls and calibrators.

## ACUSERA

Randox is a world leading manufacturer of multi-analyte, true third party controls. Thousands of laboratories rely on us to accurately assess test system performance and ultimately empower them with the confidence required to release patient test results. With more than 390 analytes available across the Acusera range we can uniquely reduce the number of individual controls required while simultaneously reducing costs, time and storage space. A choice of formats are available, including liquid or lyophilised, ensuring flexibility and suitability for laboratories of all sizes and budgets.

Some of our principle products include Clinical Chemistry, Immunoassay, Urine, Immunology/Proteins, Cardiac Markers and Therapeutic Drugs among others. As a primary manufacturer, Randox are also able to offer the unique service of custom made controls.

## RIQAS

Boasting over 45,000 participants and more than 360 parameters across 32 comprehensive & flexible EQA programmes, RIQAS is the largest international EQA scheme. Designed to cover all areas of clinical testing, each of our multi-analyte programmes benefit from a wide range of concentrations, frequent reporting, rapid feedback and informative yet user-friendly reports.

## BIOCHIP ARRAY TECHNOLOGY

Biochip Array Technology (BAT) is an innovative assay technology for multi-analyte screening of biological samples in a rapid, accurate and easy to use format. BAT offers highly specific tests, coupled to highly sensitive chemiluminescent detection, providing quantitative results in easy to interpret reports. Randox BAT assays offer diagnostic, prognostic and predictive solutions across a variety of disease areas including sexually transmitted infection, cardiovascular disease (CVD), familial hypercholesterolemia (FH), colorectal cancer and respiratory infection.

Contact us for more information on any of our products and services:

## Head Quarters

Randox Laboratories Ltd, 55 Diamond Road, Crumlin, County Antrim, BT29 4QY, United Kingdom  
 ☎ +44 (0) 28 9442 2413 ✉ [marketing@randox.com](mailto:marketing@randox.com) 🌐 [randox.com/clinical-chemistry-analysers/](http://randox.com/clinical-chemistry-analysers/)

## International Offices



**AUSTRALIA**  
 Randox (Australia) Pty Ltd.  
 Tel: +61 (0) 2 9615 4640



**BRAZIL**  
 Randox Brasil Ltda.  
 Tel: +55 11 5181-2024



**CHINA**  
 Randox Laboratories Ltd.  
 Tel: +86 021 6288 6240



**CZECH REPUBLIC**  
 Randox Laboratories S.R.O.  
 Tel: +420 2 1115 1661



**FRANCE**  
 Laboratoires Randox  
 Tel: +33 (0) 130 18 96 80



**GERMANY**  
 Randox Laboratories GmbH  
 Tel: +49 (0) 215 1937 0611



**HONG KONG**  
 Randox Laboratories Hong Kong Limited  
 Tel: +852 3595 0515



**ITALY**  
 Randox Laboratories Ltd.  
 Tel: +39 06 9896 8954



**INDIA**  
 Randox Laboratories India Pvt Ltd.  
 Tel: +91 80 2802 5000



**POLAND**  
 Randox Laboratories Polska Sp. z o.o.  
 Tel: +48 22 862 1080



**PORTUGAL**  
 Irladox Laboratorios Quimica Analitica Ltda  
 Tel: +351 22 589 8320



**PUERTO RICO**  
 Clinical Diagnostics of Puerto Rico, LLC  
 Tel: +1 787 701 7000



**REPUBLIC OF IRELAND**  
 Randox Teoranta  
 Tel: +353 7495 22600



**SLOVAKIA**  
 Randox S.R.O.  
 Tel: +421 2 6381 3324



**SOUTH AFRICA**  
 Randox Laboratories SA (Pty) Ltd.  
 Tel: +27 (0) 11 312 3590



**SOUTH KOREA**  
 Randox Korea  
 Tel: +82 (0) 31 478 3121



**SPAIN**  
 Laboratorios Randox S.L.  
 Tel: +34 93 475 09 64



**SWITZERLAND**  
 Randox Laboratories Ltd. (Switzerland)  
 Tel: +41 41 810 48 89



**UAE**  
 Randox Medical Equipments Trading LLC  
 Tel: +971 55 474 9075



**USA**  
 Randox Laboratories-US, Ltd.  
 Tel: +1 304 728 2890



**VIETNAM**  
 Randox Laboratories Ltd. Vietnam  
 Tel: +84 (0) 8 391 1 0904

For technical support contact: [technical.services@randox.com](mailto:technical.services@randox.com)



Information correct at time of print. Randox Laboratories Ltd is a subsidiary of Randox Holdings Limited a company registered within Northern Ireland with company number N.I. 614690. VAT Registered Number: GB 151 6827 08. Product availability may vary from country to country. Please contact your local Randox representative for information. Products may be for Research Use Only and not for use in diagnostic procedures in the USA.

LT408 MAR18